

Helpman LA-55/a

Specifications

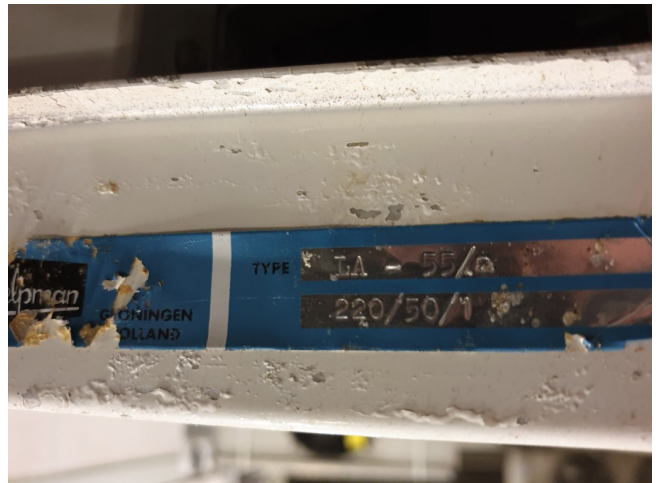
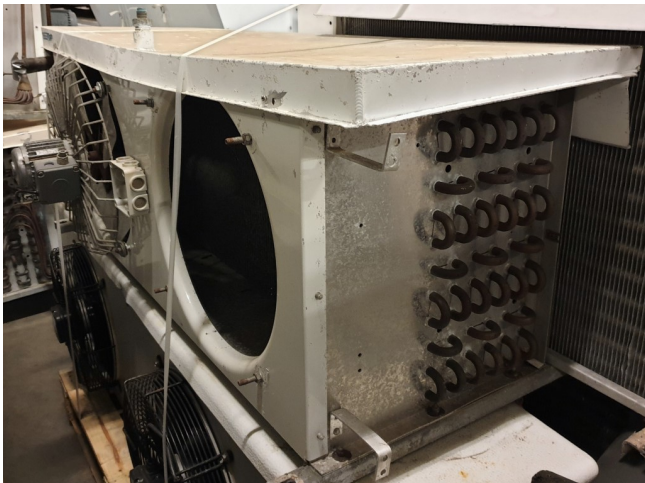
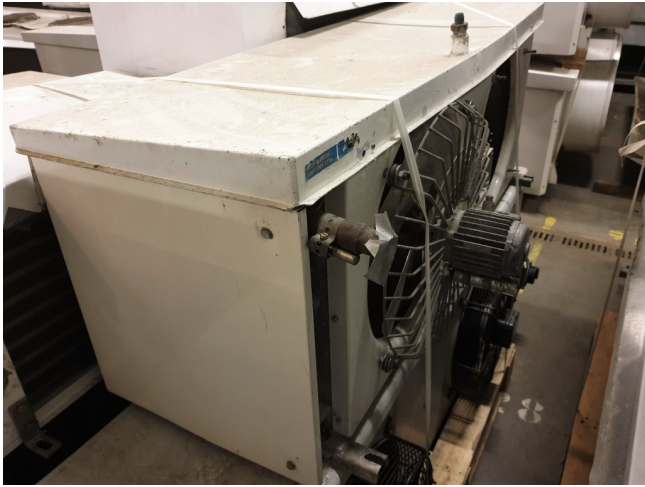
| | |
|------------------------|----------------------|
| La marque | Helpman |
| Type | LA-55/a |
| Capacité kW | 8,3 |
| Réfrigérant | Freon |
| Nombre de ventilateurs | 2 |
| Espace Fan in mm | 8 |
| Dégivrage | None |
| m ³ /h | 5600 |
| Tailles | 1360x600x530 mm |
| Volume | 10,0 dm ³ |
| Poids | 62 kg |
| Stock | 1 |



Description

Used Helpman LA-55/a

Used Goedhart LA-55/a with a fin space of 8,5 mm. One fan is missing, diameter $\varnothing = 400$ mm **All components of this used evaporator will be tested on good working, leak free condition (electro engines), coils, bearings) Choosing HOSBV means buying with warranty. We perform a industrial cleaning and rust spots will be covered. Also, we can arrange your shipment.





LUFTKÜHLER
UNIT COOLERS

LA-LV

D30-2
8-76

| Type | Nennleistung Nominal capacity $t_e = 7,5^\circ\text{C}$ $\Delta T = 10^\circ\text{C}$ kcal/h | Luftmenge Air volume m ³ /h | Ventilatoren Fans | | | | Elektr. Abtaugung Electric defrost | | | | Stromart Current | Gewicht Weight kg | Inneninhalt Internal volume l |
|--------|--|--|---------------------------|--|-----|-----|---|-------------------------------------|--|-------------------------------------|---------------------|-------------------------|-------------------------------------|
| | | | Anzahl Number | Flügel Durchmesser Fan diameter mm | W | W | Block Coil | Tropfwanne Drip tray | Motorleistung Motor power nominal, see D30-20 | Block Coil | | | |
| | | | LAMELLENABSTAND 8.5 mm | | | | FINS PACING | | | | | | |
| | | | Anzahl Number | Flügel Durchmesser Fan diameter mm | W | W | Anzahl der Heizelemente Number of elements | Gesamtleistung Total power kW | Anzahl der Heizelemente Number of elements | Gesamtleistung Total power kW | Stromart Current | Gewicht Weight kg | Inneninhalt Internal volume l |
| LA-9 | 1180 | 1000 | 1 | 254 | 70 | 90 | 1 | 0,72 | 1 | 0,72 | | 16 | 1,7 |
| LA-14 | 1770 | 1500 | 1 | 305 | 70 | 90 | 1 | 0,85 | 1 | 0,85 | 220/1 | 20 | 2,4 |
| LA-17 | 2220 | 1750 | 1 | 305 | 70 | 90 | 2 | 1,7 | 1 | 0,85 | | 24 | 3,6 |
| LA-28 | 3540 | 2800 | 1 | 406 | 70 | 90 | 2 | 2,14 | 1 | 1,07 | | 33 | 5,4 |
| LA-37 | 4750 | 3700 | 1 | 457 | 70 | 90 | 5 | 4,75 | 1 | 0,95 | 220/1 | 44 | 7,1 |
| LA-48 | 6150 | 4900 | 1 | 508 | 220 | 250 | 5 | 5 | 1 | 1 | 220/3 | 58 | 9,2 |
| LA-55 | 7100 | 5600 | 2 | 406 | 70 | 90 | 2 | 3,8 | 1 | 1,9 | 380/3 | 62 | 10,0 |
| LA-74 | 9500 | 7400 | 2 | 457 | 70 | 90 | 5 | 8,5 | 1 | 1,7 | | 83 | 13,3 |
| LA-97 | 12500 | 9800 | 2 | 508 | 220 | 250 | 5 | 10 | 1 | 2 | | 105 | 17,4 |
| LA-145 | 18600 | 14700 | 3 | 508 | 220 | 250 | 5 | 13 | 1 | 2,6 | | 150 | 25,6 |
| LA-193 | 24800 | 19600 | 4 | 508 | 220 | 250 | 7 | 15,4 | 2 | 4,4 | | 202 | 33,0 |
| | | | LAMELLENABSTAND 4 mm | | | | FINS PACING | | | | | | |
| | | | Anzahl Number | Flügel Durchmesser Fan diameter mm | W | W | Anzahl der Heizelemente Number of elements | Gesamtleistung Total power kW | Anzahl der Heizelemente Number of elements | Gesamtleistung Total power kW | Stromart Current | Gewicht Weight kg | Inneninhalt Internal volume l |
| LV-10 | 1230 | 1000 | 1 | 254 | 70 | 90 | 1 | 0,72 | 1 | 0,72 | | 15 | 1,3 |
| LV-14 | 1850 | 1500 | 1 | 305 | 70 | 90 | 1 | 0,85 | 1 | 0,85 | 220/1 | 20 | 1,8 |